

**Northeastern Kansas Beekeepers Association &  
The Midwestern Beekeepers Association Present**

**Beginner's Beekeeping Class**

**Saturday March 17<sup>th</sup> 2012 8-5:30**

**Matt Ross Community Center**

**8101 Marty (1 block west of Metcalf)**

**Overland Park KS 66204**

**Multi Purpose Room**

*For additional information call:*

*Cecil Sweeney, days: 913-856-8356 or email [joli@heartlandhoney.com](mailto:joli@heartlandhoney.com)*

*Download extra registration forms & programs at [nekba.org](http://nekba.org)*

**A boxed lunch and beverages will be provided**

**Fees (if you have questions about the fees call us):** The registration fee is for one family member/beekeeper, additional people may attend for \$20.00 each, this includes a box lunch.

**Members who have already paid their dues - \$20.00 (includes a supplement to last year's notebook and a box lunch)**

**Members who have already paid their dues-\$45.00 includes a notebook and a box lunch**

**Non-members-\$60.00, includes a one year membership in one of the clubs, a box lunch & full notebook**

**New members** will be eligible to win a starter single story hive and a 3-pound package of bees with a queen. All other registrants will be eligible to win door prizes. You must be present to win.

Each paid registration will receive one door prize ticket.

**Saturday**

8-8:30      **Registration**

8:30-8:45      **Introductions of club officers**, Andy Nowachek moderates

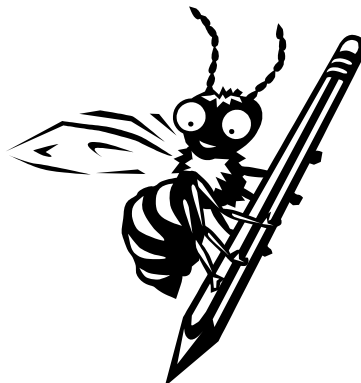
8:45-9:35(50)      **Basic Equipment**, tools to use, clothing, woodware. Learn the proper names for beekeeping equipment. This presentation will give you a good idea of the equipment you have to have to keep bees. Jim Fisher, board member, Midwestern Beekeepers Assn.

9:35-10:20(45) **Honey Bee Biology**, Joli Winer will present a PowerPoint on how bees make wax, their bee body parts, how long it takes bees to develop from egg to adult and the different jobs the bees have in the hive, just the basics! Joli is the newsletter editor for both the Northeast KS Beekeepers & the Midwestern Beekeepers, her dog Buzz writes a column.

10:20-10:35(15) **Break**

10:35-11:35(60 Min)      **Ways to Acquire Bees, Management of Package Bees and Spring Management of Bees** Our speakers Becky and Steve Tipton talk about the various ways you can get bees and will demonstrate how to install a package of bees. They will follow that with how to take care of your new hive of bees from how long you need to feed them, when to put on the next hive body and when to add your honey supers. Steve and Becky are members of both the Northeast KS Beekeepers & the Midwestern Beekeepers.

- 11:35-12:10 **Bee Diseases & Pests** The Big 5 diseases and pests will be presented—American Foulbrood, European Foulbrood, Nosema, Varroa Mites and Small Hive Beetle. This is for identification purposes only. We suggest that you attend the May program of your beekeeping association for an in depth Bee Disease and Integrated Pest Management presentation. Gary Ross, Retired Apiary Inspector from Ottawa KS
- 12:10-1:00 **Lunch**, Box lunches are provided
- 1:00-1:45(45) **Seasonal Management-Late Summer and Fall** Removing your honey from the hives, fall management, includes checking your hives to make sure they have enough bees and food and getting your bees ready for winter. Cecil Sweeney presents this. Cecil has been an officer in both clubs.
- 1:45-2:15(30) **Opportunities for members of the bee clubs. Books, videos and magazines**, Our speaker will talk about our wonderful libraries, our Funday and our monthly meetings. He'll recommend some of the workshop "presenters" favorite books, videos/DVD and he'll encourage you to subscribe to at least one beekeeping magazine. He will also let you know about other associations such as The Kansas Honey Producer's Association and the Missouri State Beekeepers Association and more. Tom is the librarian for the Midwestern Beekeepers Assn.
- 2:15-3:00 **Integrated Pest Management** Becky's 'gloom and doom' talk is actually very positive. What could be more positive than learning how to keep your bees healthy? Becky will share various methods of how to check what your mite levels are and various ways to treat your hives. This is a very important talk. Our bees have Varroa mites; to succeed as a beekeeper you must be knowledgeable in learning how to keep your bees alive with them. Becky Tipton presents.
- 3:00-3:15 **Break**
- 3:15-4:00(45) **Extracting Honey** Club members will demonstrate how to remove honey from your hives and uncap your honey, extract it and bottle it for sale and gifts. Andy Nowachek, (Andy is President Midwestern Beekeepers Assn. & a member of the Northeast KS Beekeepers)
- 4:00-4:30(30) **Beekeeping Etiquette** Cathy Misko will demonstrate how to light your smoker, approach a hive, open it up and get started on your beekeeping adventure. Cathy is Secretary of the Midwestern Beekeepers Assn. & a member of the Northeast KS Beekeepers Assn.
- 4:30- close **Question and Answer Session & Drawing for door prizes**-you must be present to win, one door prize ticket per paid registration. Presidents Michael Sinclair & Andy Nowachek with all presenters will answer questions.



**Program and presenters subject to change**